

MESSAGE IN A BOTTLE

Palo Verde College

Important Dates

February 1— Men and Women’s Basketball game
February 6— Make-up New Student Orientation
February 7— Last day to register
February 8— Men and Women’s Basketball game
February 13— Last day to withdraw without “W”
February 14— Valentines Day
February 14— Lincoln Day Campus closed
February 17— Washington Day Campus closed
February 19— Men and Women’s Basketball game

Black History Month

Black History Month is an annual celebration of achievements by African Americans and a time for recognizing the central role of blacks in U.S. history. Also known as African American History Month, the event grew out of “Negro History Week,” the brainchild of noted historian Carter G. Woodson and other prominent African Americans. Since 1976, every U.S. president has officially designated the month of February as Black History Month. Other countries around the world, including Canada and the United Kingdom, also devote a month to celebrating black history.



Groundhog Day

Groundhog Day is celebrated in the U.S. each year on February 2. On this day in mid-winter, the groundhog awakens from a long winter's nap, and goes outside of his den to see if he sees his shadow. This tradition is big, on an otherwise cold and dreary mid-winter's day. According to legend, if the groundhog sees his shadow (a sunny morning), there will be six more weeks of winter. He then returns to his den and goes back to sleep. If however, he does not see his shadow (cloudy days), he plays around outside of his hole for a while. If he does not see his shadow, spring is just around the corner.



President’s Day

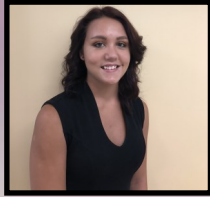
The origin of Presidents’ Day lies in the 1880s, when the birthday of Washington was first celebrated as a federal holiday. In 1968 Congress passed the Uniform Monday Holiday Bill, which moved a number of federal holidays to Mondays. The change was designed to schedule certain holidays so that workers had a number of long weekends throughout the year, but it has been opposed by those who believe that those holidays should be celebrated on the dates they actually commemorate. During debate on the bill, it was proposed that Washington’s Birthday be renamed Presidents’ Day to honor the birthdays of both Washington (February 22) and Lincoln (February 12).



This Issue

Origin of Black	1
Groundhog Day	1
President’s Day	1
Day of Welcome	2
Heart Disease	2

Associated Student Government Officers



Rebekah Smith	Jose Rascon	Shaquila Bowen	Serenity Thomas
President	Vice President	Secretary	Business Manager



Sunil Lal	Norma Nieto	Megan Currier	Staci Lee
Student Trustee	Historian	Commissioner of Publicity	Advisor

One College Drive Blythe, CA 92225

Phone: 760-921-5199 Fax: 760-921-3608

Email: staci.lee@paloverde.edu

Meetings held every Tuesday @11 in the ASG Room (CS133). All students welcome!



Day of Welcome

Day of Welcome was held January 28, 2020. We gave away nachos to all the new and returning students to give them all a warm welcome back to school. All of us from ASG want to wish everybody a wonderful semester and good luck in all your classes.

Just remember to believe in yourself as much as we believe in you.



American Heart Month

Heart disease is the leading cause of death for men and women in the United States. Every year, 1 in 4 deaths are caused by heart disease. The good news? Heart disease can often be prevented when people make healthy choices and manage their health conditions. Communities, health professionals, and families can work together to create opportunities for people to make healthier choices. Make a difference in your community: Spread the word about strategies for preventing heart disease and encourage people to live heart healthy lives.

